

Verano® MAKE THIS YOUR MOMENT



COLLECTIE PLISSÉS

## LICHTREGULERING EN PRIVACY

Raamdecoratie wordt niet alleen decoratief, maar ook functioneel toegepast. Een van de belangrijkste eigenschappen van raamdecoratie is het weren van invallend zonlicht. Invallend zonlicht zorgt voor oververhitting en heeft een negatief effect op het zichtcomfort. De mate van licht- en warmtewering is afhankelijk van de kleur en het materiaal van de raamdecoratie.

Wist je dat raamdecoratie tevens een relatief onbekend wapen is om energie te besparen? De isolatiewaarde van ramen, dus hoe goed (of slecht) de ramen warmte in huis houden, wordt sterk verbeterd door de toevoeging van raamdecoratie doordat er met raamdecoratie een extra luchtspouw wordt gecreëerd. Raamdecoratie kan de isolatiewaarde van enkel glas tot wel 60% verhogen!

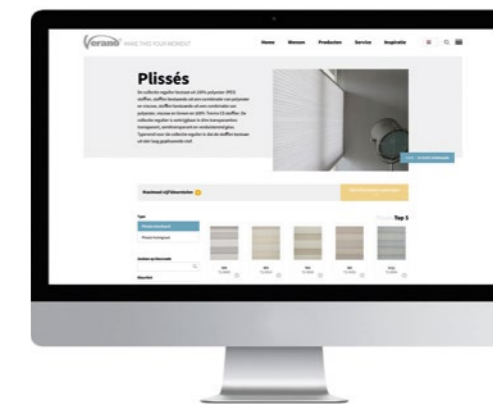
In deze brochure vind je alle kleuren en eigenschappen van de collectie plissés. Wil je meer informatie over onze raamdecoratie collectie? Bekijk dan onze raamdecoratie brochure.





## GRATIS KLEURSTALEN

Op [www.verano.nl/gratis-kleurstalen](http://www.verano.nl/gratis-kleurstalen) kun je gratis vijf kleurstalen aanvragen. Op deze manier kun je de materialen voelen en de kleuren 'matchen' met elementen uit jouw interieur.



Scan deze QR-code met de camera van je smartphone en vraag direct je gratis kleurstalen aan!

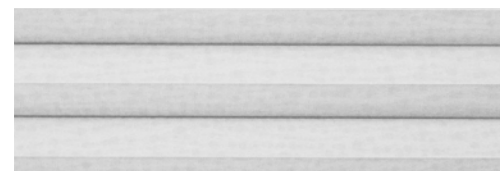
## COLLECTIE HONINGRAAT

De collectie honingraat bestaat uit 100% polyester stoffen. De collectie honingraat is verkrijgbaar in vier transparanties: transparant, semi-transparant, lichtdoorlatend en verduisterend plus. Typisch voor de collectie honingraat is dat honingraatstoffen bestaan uit twee lagen gevouwen stof in een honingraatstructuur. Tussen de dubbele stoflaag wordt lucht vastgehouden, wat de isolatiewaarde van ramen sterk verbetert.



## HONINGRAAT PLISSÉSSTOFFEN

WHITE



**72.0360** PG: 3

100% PES

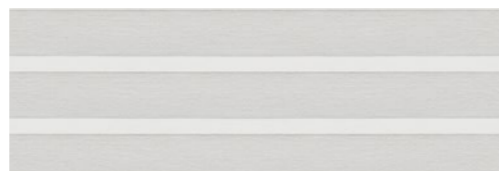
RS: 61 AS: 10 TS: 29 300 mm



**72.0434** PG: 0

100% PES

RS: 51 AS: 14 TS: 35 300 mm



**72.0455** PG: 2

100% PES

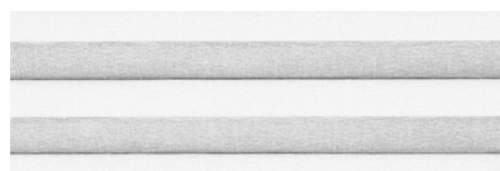
RS: 70 AS: 30 TS: 0 300 mm



**72.0316** PG: 5

100% PES

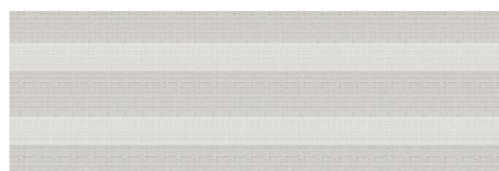
RS: 51 AS: 15 TS: 34 300 mm



**72.0324** PG: 1

100% PES

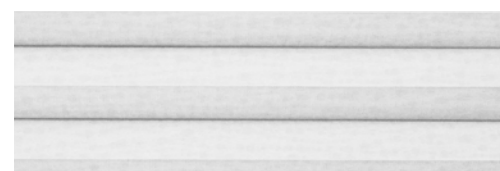
RS: 52 AS: 10 TS: 38 300 mm



**72.0413** PG: 5

100% PES

RS: 54 AS: 20 TS: 26 300 mm



**72.0355** PG: 4

100% PES

RS: 68 AS: 32 TS: 0 250 mm



**72.0334** PG: 2

100% PES

RS: 68 AS: 32 TS: 0 300 mm



**72.0401** PG: 2

100% PES

RS: 61 AS: 10 TS: 29 250 mm

## HONINGRAAT PLISSÉSSTOFFEN

WHITE



**73.1005** PG: 4

100% PES

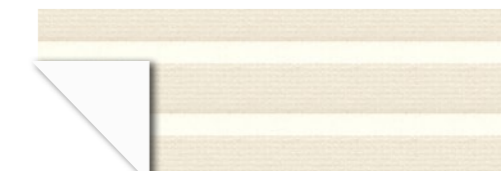
RS: 67 AS: 33 TS: 0 300 mm



**72.0365** PG: 4

100% PES

RS: 60 AS: 12 TS: 28 300 mm



**72.0436** PG: 0

100% PES

RS: 53 AS: 15 TS: 32 300 mm



**72.0327** PG: 1

100% PES

RS: 58 AS: 8 TS: 34 300 mm



**73.1001** PG: 3

100% PES


RS: 46 AS: 14 TS: 40 300 mm

## HONINGRAAT PLISSÉSSTOFFEN

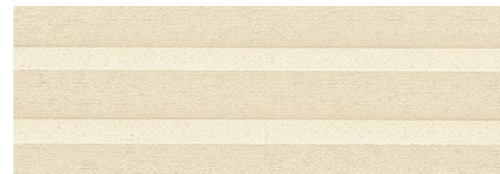
BEIGE

**72.0456** PG: 2


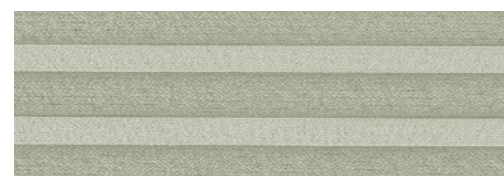
100% PES

RS: 70 AS: 30 TS: 0  300 mm**72.0320** PG: 5

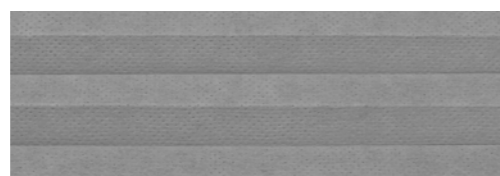
100% PES

RS: 58 AS: 14 TS: 28  300 mm**72.0406** PG: 2


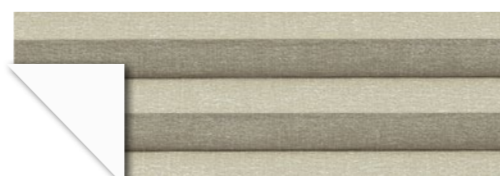
100% PES

RS: 62 AS: 9 TS: 29  250 mm**72.0408** PG: 2


100% PES

RS: 52 AS: 28 TS: 20  250 mm**72.0345** PG: 1


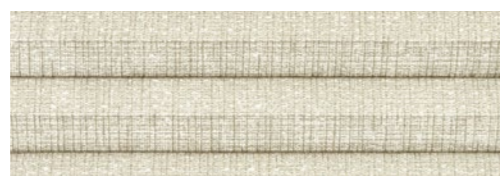
100% PES

RS: 42 AS: 32 TS: 26  300 mm**72.0325** PG: 1

100% PES

RS: 55 AS: 23 TS: 22  300 mm**72.0337** PG: 2


100% PES

RS: 68 AS: 32 TS: 0  300 mm**72.0366** PG: 4

100% PES

RS: 56 AS: 15 TS: 29  300 mm**72.0321** PG: 5

100% PES


RS: 51 AS: 27 TS: 22  300 mm

## HONINGRAAT PLISSÉSSTOFFEN


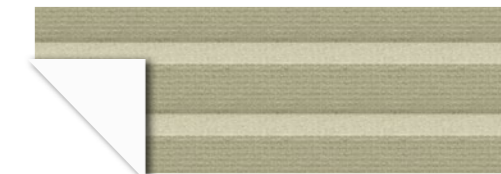
BEIGE

**72.0333** PG: 2


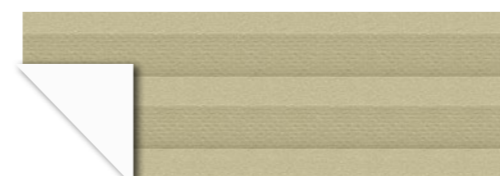
100% PES

RS: 68 AS: 32 TS: 0  300 mm**72.0437** PG: 0



100% PES

RS: 53 AS: 15 TS: 32  300 mm**72.0307** PG: 2


100% PES

RS: 70 AS: 30 TS: 0  300 mm**73.1002** PG: 3


100% PES

RS: 48 AS: 12 TS: 40  300 mm **73.1007** PG: 4

100% PES

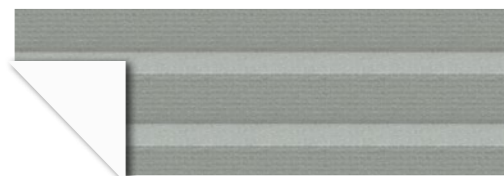
RS: 67 AS: 33 TS: 0  300 mm **72.0459** PG: 2

100% PES

RS: 70 AS: 30 TS: 0  300 mm

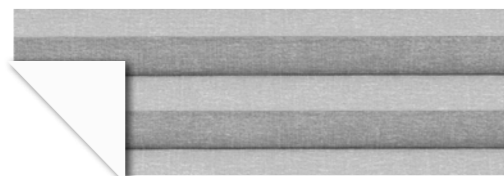
## HONINGRAAT PLISSÉSSTOFFEN

LIGHT GREY

**72.0443** PG: 0

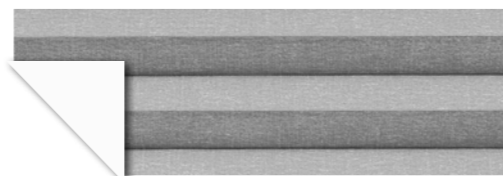
100% PES

RS: 52 AS: 21 TS: 27 300 mm

**72.0332** PG: 1

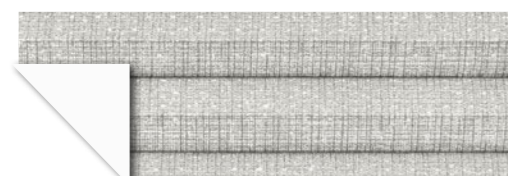
100% PES

RS: 53 AS: 22 TS: 25 300 mm

**72.0335** PG: 2

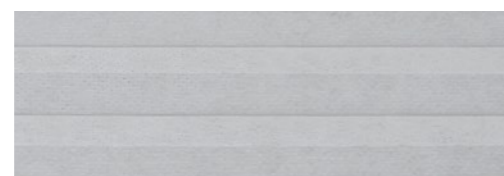
100% PES

RS: 68 AS: 32 TS: 0 300 mm

**72.0367** PG: 4

100% PES

RS: 52 AS: 34 TS: 14 300 mm

**72.0343** PG: 1

100% PES

RS: 51 AS: 22 TS: 27 300 mm

**72.0415** PG: 5

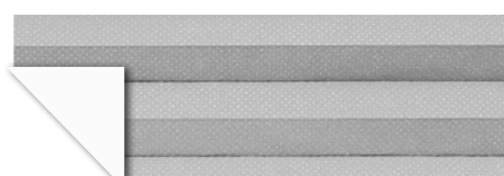
100% PES

RS: 56 AS: 19 TS: 25 300 mm

**72.0403** PG: 2

100% PES

RS: 50 AS: 31 TS: 19 250 mm

**72.0313** PG: 3

100% PES

RS: 57 AS: 12 TS: 31 300 mm 300 mm

**72.0317** PG: 5

100% PES

RS: 52 AS: 21 TS: 27 300 mm

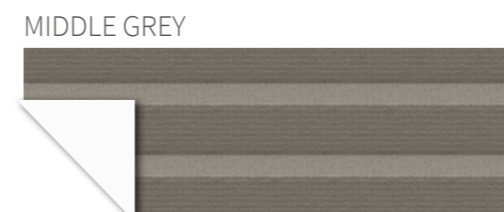
## HONINGRAAT PLISSÉSSTOFFEN

LIGHT GREY

**72.0322** PG: 5

100% PES

RS: 44 AS: 39 TS: 17 300 mm

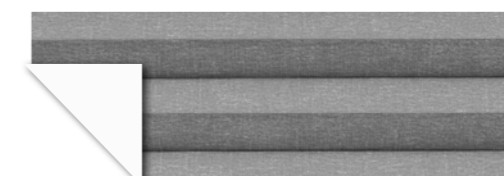


MIDDLE GREY

**72.0300** PG: 0

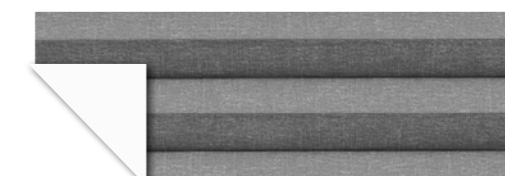
100% PES

RS: 49 AS: 32 TS: 19 300 mm

**72.0331** PG: 1

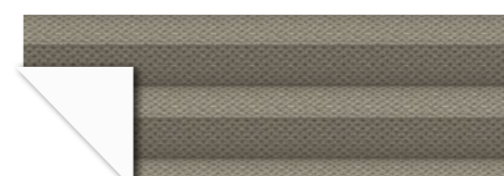
100% PES

RS: 49 AS: 31 TS: 20 300 mm

**72.0336** PG: 2

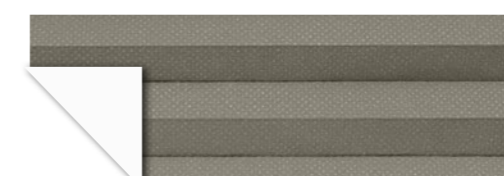
100% PES

RS: 68 AS: 32 TS: 0 300 mm

**72.0432** PG: 2

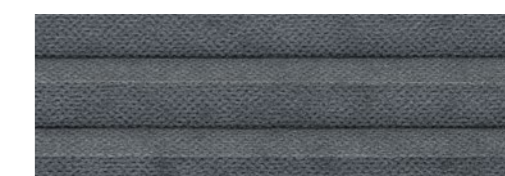
100% PES

RS: 67 AS: 33 TS: 0 300 mm

**72.0314** PG: 3

100% PES

RS: 57 AS: 16 TS: 27 300 mm 300 mm

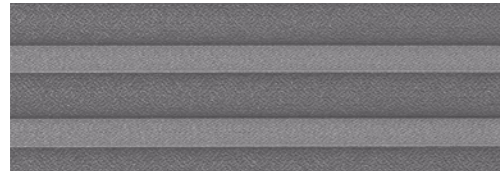
**72.0346** PG: 1

100% PES

RS: 16 AS: 73 TS: 11 300 mm

## HONINGRAAT PLISSÉSSTOFFEN

MIDDLE GREY

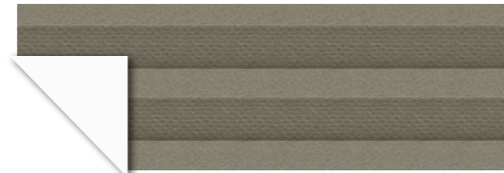
**72.0404**

PG: 2



100% PES

RS: 38 AS: 47 TS: 15 250 mm

**73.1004**

PG: 3



100% PES

RS: 47 AS: 21 TS: 32 300 mm

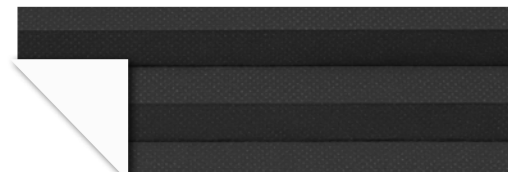
**72.0306**

PG: 2



100% PES

RS: 70 AS: 30 TS: 0 300 mm

**72.0315**

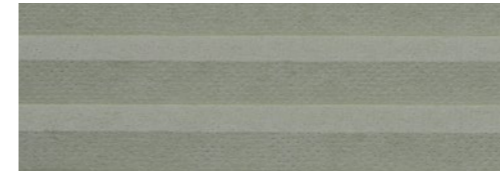
PG: 4



100% PES

RS: 67 AS: 33 TS: 0 300 mm

GREEN GREY

**72.0344**

PG: 1



100% PES

RS: 50 AS: 19 TS: 31 300 mm

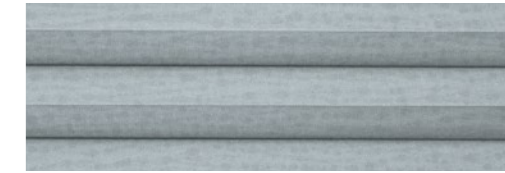
**72.0362**

PG: 3



100% PES

RS: 50 AS: 31 TS: 19 250 mm

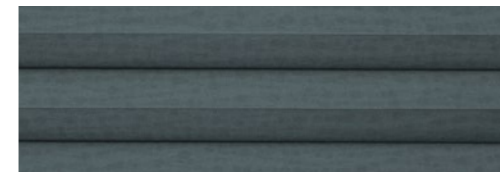
**72.0357**

PG: 4



100% PES

RS: 68 AS: 32 TS: 0 250 mm

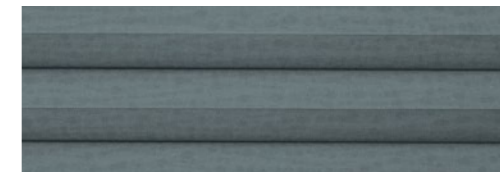
**72.0363**

PG: 3



100% PES

RS: 38 AS: 47 TS: 15 250 mm

**72.0358**

PG: 4



100% PES

RS: 68 AS: 32 TS: 0 250 mm

## HONINGRAAT PLISSÉSSTOFFEN



## HONINGRAAT PLISSÉSSTOFFEN

PASTEL



**72.0303** PG: 0

100% PES

RS: 53 AS: 15 TS: 32 300 mm



**72.0309** PG: 2

100% PES

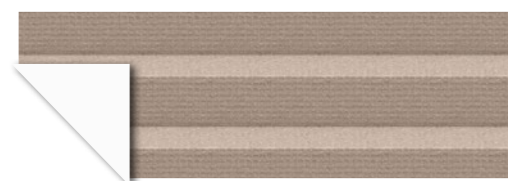
RS: 70 AS: 30 TS: 0 300 mm



**72.0302** PG: 0

100% PES

RS: 52 AS: 21 TS: 27 300 mm



**72.0311** PG: 2

100% PES

RS: 70 AS: 30 TS: 0 300 mm



**72.0304** PG: 0

100% PES

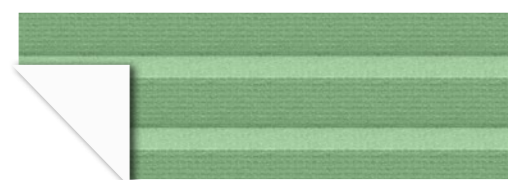
RS: 44 AS: 29 TS: 27 300 mm



**72.0310** PG: 2

100% PES

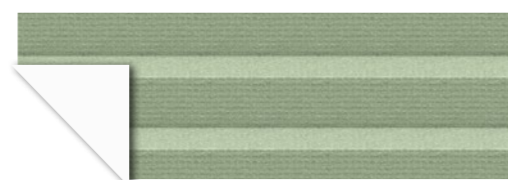
RS: 70 AS: 30 TS: 0 300 mm



**72.0305** PG: 0

100% PES

RS: 53 AS: 14 TS: 33 300 mm



**72.0312** PG: 2

100% PES

RS: 70 AS: 30 TS: 0 300 mm



**72.0447** PG: 0

100% PES

RS: 31 AS: 55 TS: 14 300 mm

## HONINGRAAT PLISSÉSSTOFFEN

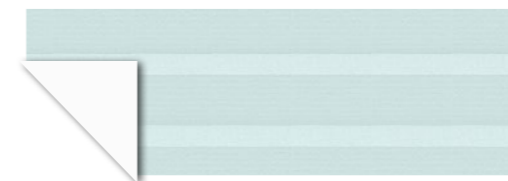
PASTEL



**72.0468** PG: 2

100% PES

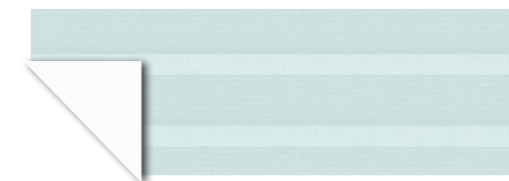
RS: 70 AS: 30 TS: 0 300 mm



**72.0444** PG: 0

100% PES

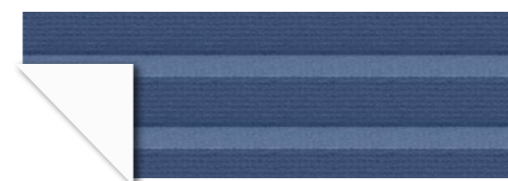
RS: 53 AS: 15 TS: 32 300 mm



**72.0465** PG: 2

100% PES

RS: 70 AS: 30 TS: 0 300 mm



**72.0400** PG: 0

100% PES

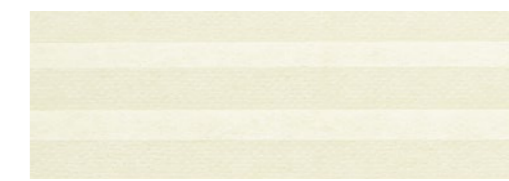
RS: 44 AS: 29 TS: 27 300 mm



**72.0402** PG: 2

100% PES

RS: 70 AS: 30 TS: 0 300 mm



**72.0349** PG: 1

100% PES

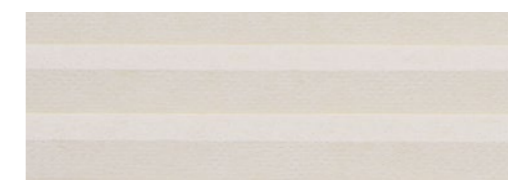
RS: 56 AS: 11 TS: 33 300 mm



**72.0353** PG: 1

100% PES

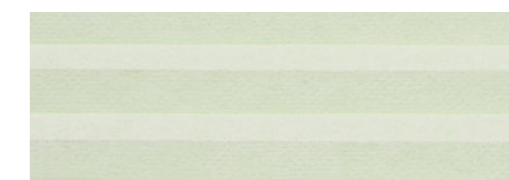
RS: 50 AS: 21 TS: 29 300 mm



**72.0354** PG: 1

100% PES

RS: 55 AS: 14 TS: 31 300 mm



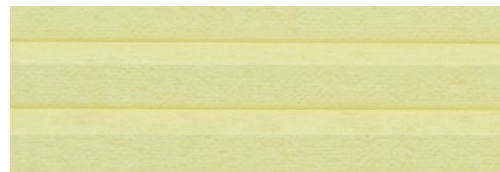
**72.0351** PG: 1

100% PES


RS: 53 AS: 19 TS: 28 300 mm

## HONINGRAAT PLISSÉSSTOFFEN


PASTEL

**72.0350** PG: 1

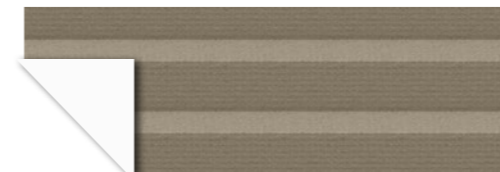
100% PES

RS: 49 AS: 20 TS: 31  300 mm**72.0352** PG: 1

100% PES

RS: 47 AS: 26 TS: 27  300 mm


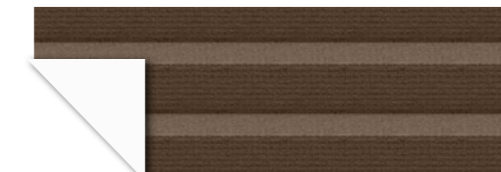
BROWN

**72.0438** PG: 0

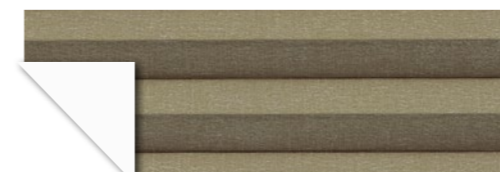
100% PES

RS: 50 AS: 24 TS: 26  300 mm**72.0347** PG: 1

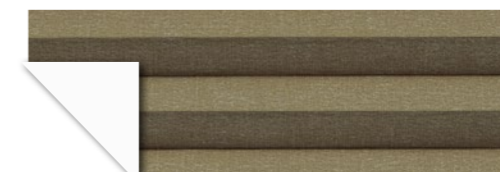
100% PES

RS: 33 AS: 39 TS: 28  300 mm**72.0440** PG: 0


100% PES

RS: 31 AS: 55 TS: 14  300 mm**72.0326** PG: 1


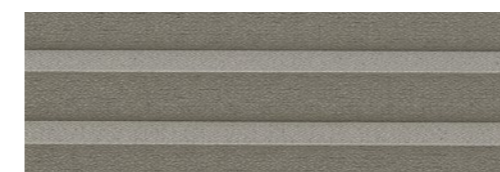
100% PES

RS: 48 AS: 34 TS: 18  300 mm**72.0338** PG: 2


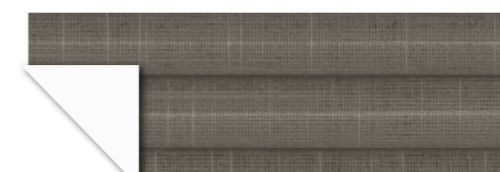
100% PES

RS: 68 AS: 32 TS: 0  300 mm**72.0460** PG: 2

100% PES

RS: 70 AS: 30 TS: 0  300 mm**73.0409** PG: 2

100% PES

RS: 43 AS: 41 TS: 16  250 mm**72.0318** PG: 5

100% PES

RS: 50 AS: 28 TS: 22  300 mm


## HONINGRAAT PLISSÉSSTOFFEN

## HONINGRAAT PLISSÉSSTOFFEN


ANTHRACITE

**73.1010** PG: 4

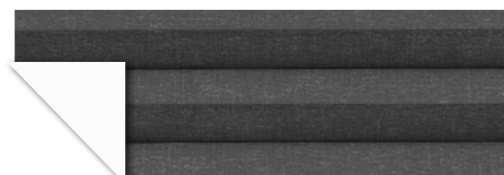
100% PES

RS: 67 AS: 33 TS: 0 **72.0462** PG: 2


100% PES

RS: 70 AS: 30 TS: 0 **72.0441** PG: 0

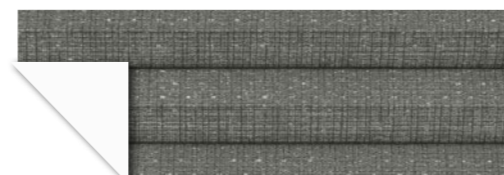

100% PES

RS: 31 AS: 55 TS: 14 **72.0328** PG: 1

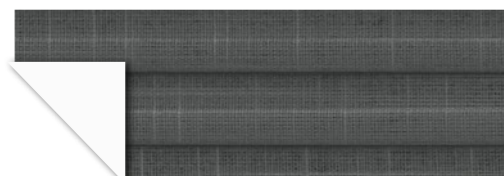

100% PES

RS: 51 AS: 40 TS: 9 **72.0323** PG: 5

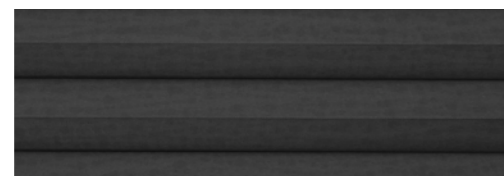

100% PES

RS: 11 AS: 80 TS: 9 **72.0368** PG: 4

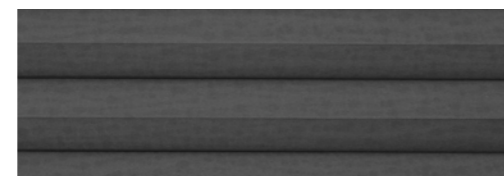
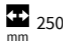
100% PES

RS: 48 AS: 42 TS: 10 **72.0319** PG: 5

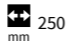
100% PES

RS: 45 AS: 36 TS: 19 **72.0364** PG: 3

100% PES

RS: 43 AS: 41 TS: 16 **72.0359** PG: 4

100% PES

RS: 68 AS: 32 TS: 0 

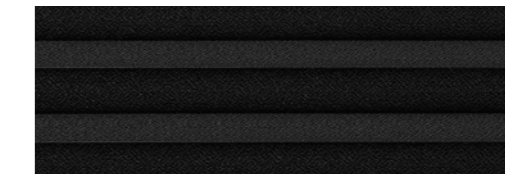
BLACK

**72.0301** PG: 0

100% PES

RS: 31 AS: 55 TS: 14 **72.0348** PG: 1

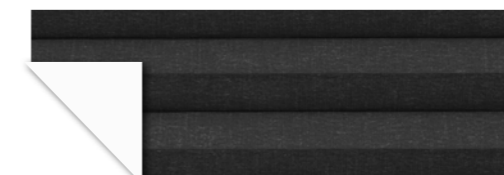

100% PES

RS: 5 AS: 94 TS: 1 **72.0405** PG: 2

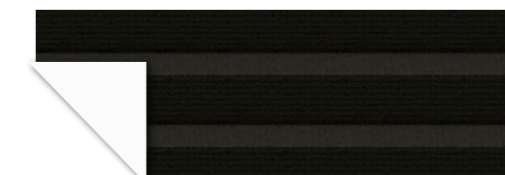

100% PES

RS: 38 AS: 47 TS: 15 **72.0369** PG: 4


100% PES

RS: 53 AS: 27 TS: 20 **72.0330** PG: 1

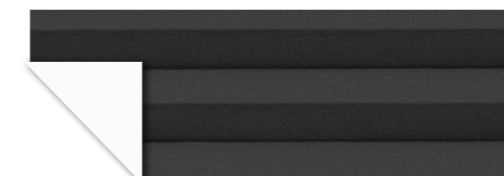
100% PES

RS: 41 AS: 51 TS: 8 **72.0308** PG: 2

100% PES

RS: 70 AS: 30 TS: 0 **72.0144** PG: 2


100% PES

RS: 67 AS: 33 TS: 0 **72.0339** PG: 2

100% PES

RS: 68 AS: 32 TS: 0 **73.1008** PG: 4

100% PES

RS: 67 AS: 33 TS: 0 

## HONINGRAAT PLISSÉSSTOFFEN

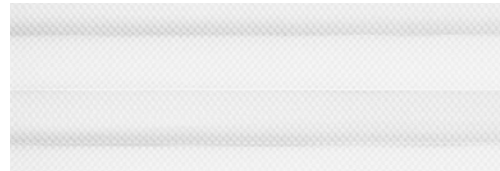
## COLLECTIE PLISSÉ




Deze collectie bestaat uit 100% polyester (PES) stoffen, 100% Trevira CS of stoffen bestaande uit een combinatie van polyester en linnen. De collectie is verkrijgbaar in vier transparanties: transparant, semi-transparant, lichtdoorlatend en verduisterend plus. Typisch voor deze collectie is dat de kleuren bestaan uit veel natuurlijke en pasteltinten die rust en zachtheid uitstralen. De collectie met vernieuwde patronen en dubbelzijdige kleuren creëert een modieuze en rustgevende uitstraling voor elke woning.





## PLISSÉSTOFFEN

WHITE



**72.0388** PG: 0   
100% recycled PES  
RS: 47 AS: 3 TS: 50  225 mm 






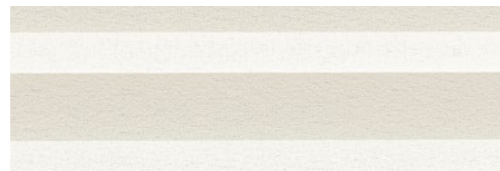
**72.0395** PG: 1   
100% PES  
RS: 52 AS: 6 TS: 42  225 mm






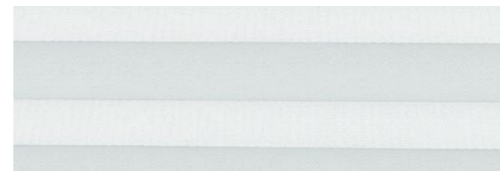
**73.0002** PG: 1   
100% Trevira CS  
RS: 45 AS: 1 TS: 54  225 mm 





**72.0374** PG: 1   
100% Trevira CS  
RS: 50 AS: 4 TS: 46  225 mm 






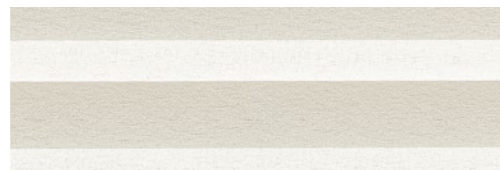
**72.0005** PG: 0   
100% PES  
RS: 43 AS: 5 TS: 52  225 mm 






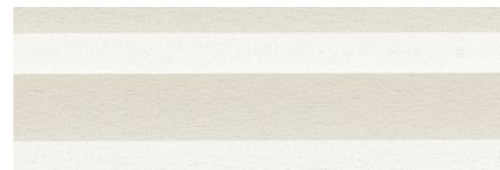
**72.0386** PG: 1   
100% PES  
RS: 67 AS: 33 TS: 0  225 mm






**72.0032** PG: 0   
100% PES  
RS: 58 AS: 8 TS: 34  225 mm 



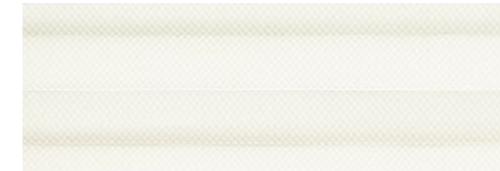
**72.0026** PG: 0   
100% PES  
RS: - AS: - TS: -  225 mm 






**72.0014** PG: 0   
100% PES  
RS: - AS: - TS: -  225 mm 

## PLISSÉSTOFFEN



WHITE




**72.0389** PG: 0   
100% recycled PES  
RS: 47 AS: 5 TS: 48  225 mm 

BEIGE





**72.0394** PG: 1   
100% PES  
RS: 44 AS: 20 TS: 36  225 mm





**73.0014** PG: 1   
100% Trevira CS  
RS: 41 AS: 14 TS: 45  225 mm 





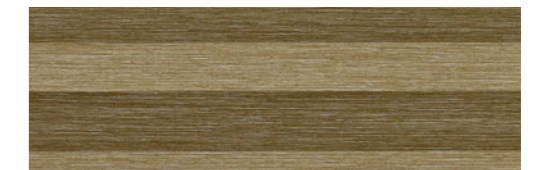
**72.0164** PG: 1   
100% PES  
RS: 41 AS: 30 TS: 29  225 mm





**72.0025** PG: 1   
95% PES + 5% Linnen  
RS: - AS: - TS: -  225 mm



**72.0183** PG: 1   
100% PES  
RS: 42 AS: 32 TS: 26  225 mm





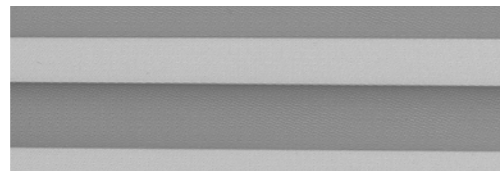
**72.0168** PG: 1   
100% PES  
RS: - AS: - TS: -  225 mm



## PLISSÉSTOFFEN

LIGHT GREY





**72.0398** PG: 1   
 100% PES  
 RS: - AS: - TS: -  225 mm






**72.0385** PG: 1   
 100% PES  
 RS: - AS: - TS: -  225 mm






**72.0399** PG: 1   
 95% PES + 5% Linnen  
 RS: 35 AS: 14 TS: 51  225 mm





**72.0054** PG: 0   
 100% PES  
 RS: - AS: - TS: -  225 mm 

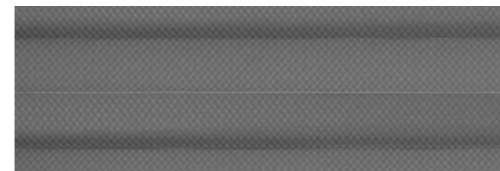





**72.0042** PG: 0   
 100% PES  
 RS: - AS: - TS: -  225 mm 

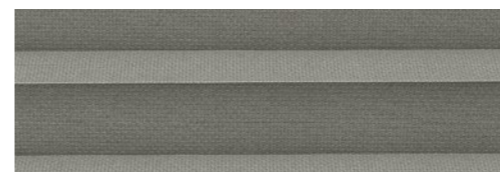


**73.0387** PG: 1   
 100% PES  
 RS: - AS: - TS: -  225 mm

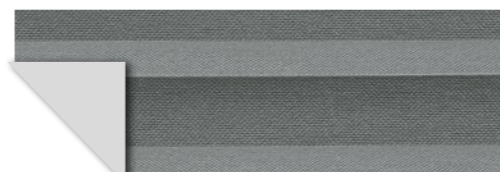
MIDDLE GREY



**72.0391** PG: 0   
 100% recycled PES  
 RS: 29 AS: 42 TS: 29  225 mm 

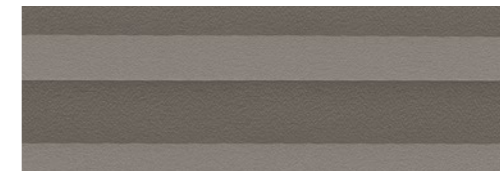


**73.0012** PG: 1   
 100% Trevira CS  
 RS: 42 AS: 29 TS: 29  225 mm 

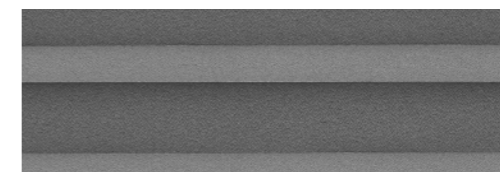


**72.0381** PG: 2   
 100% Trevira CS  
 RS: 48 AS: 34 TS: 18  225 mm 

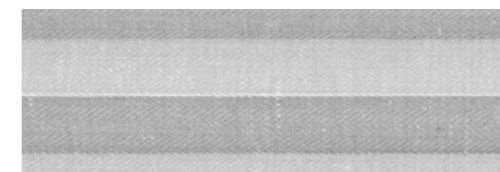
## PLISSÉSTOFFEN





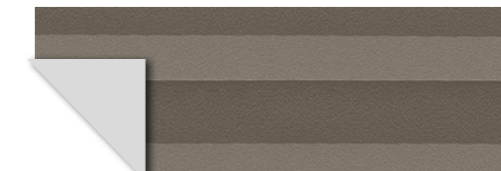
**72.0376** PG: 0   
 100% PES  
 RS: 28 AS: 38 TS: 34  225 mm 






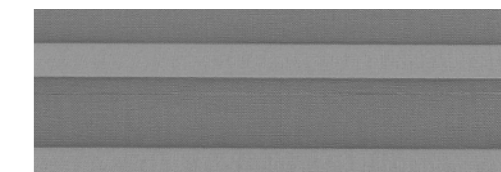
**73.0013** PG: 1   
 100% Trevira CS  
 RS: 56 AS: 38 TS: 6  225 mm 



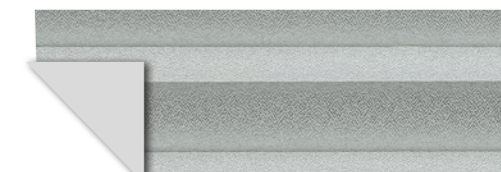
**72.0397** PG: 1   
 100% PES  
 RS: 47 AS: 15 TS: 38  225 mm



**73.0379** PG: 0   
 100% PES  
 RS: 50 AS: 27 TS: 23  225 mm 



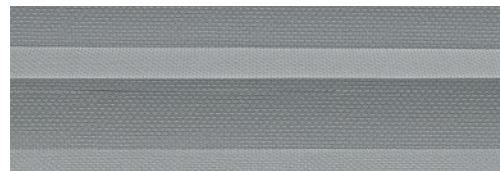
**72.0372** PG: 1   
 100% Trevira CS  
 RS: - AS: - TS: -  225 mm 


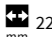



**73.0007** PG: 1   
 100% Trevira CS  
 RS: 56 AS: 36 TS: 8  225 mm 

## PLISSÉSTOFFEN


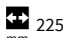

## MIDDLE GREY

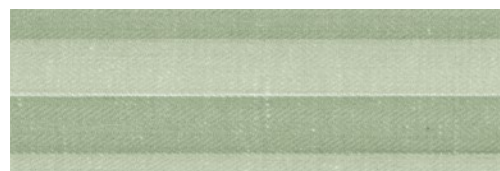



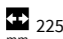
**73.0011** PG: **1**   
 100% Trevira CS  
 RS: 44 AS: 30 TS: 26  225 mm 

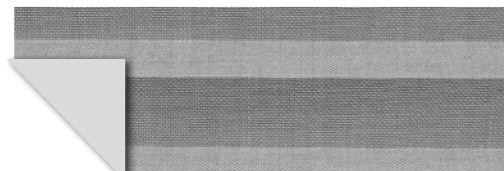
## GREEN GREY






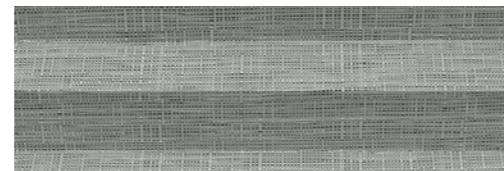
**72.0390** PG: **0**   
 100% recycled PES  
 RS: 44 AS: 12 TS: 44  225 mm 


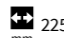


**72.0396** PG: **1**   
 100% PES  
 RS: 44 AS: 20 TS: 36  225 mm

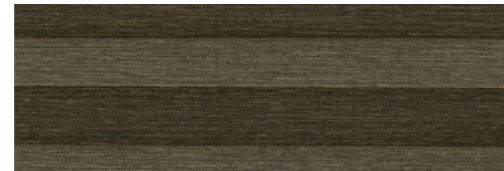



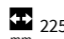
**72.0382** PG: **2**   
 100% Trevira CS  
 RS: 48 AS: 31 TS: 21  225 mm 

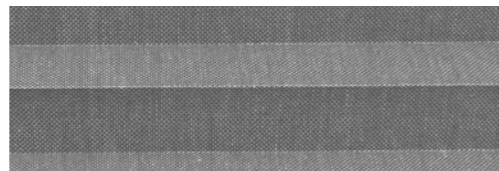





**72.0184** PG: **1**   
 100% PES  
 RS: - AS: - TS: -  225 mm

## BROWN


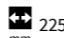


**72.0170** PG: **1**   
 100% PES  
 RS: - AS: - TS: -  225 mm

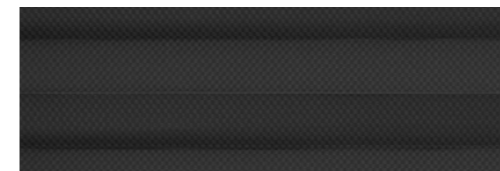





**73.0031** PG: **1**   
 100% Trevira CS  
 RS: 34 AS: 25 TS: 41  225 mm 



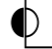
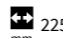

**72.0177** PG: **1**   
 95% PES + 5% Linnen  
 RS: - AS: - TS: -  225 mm

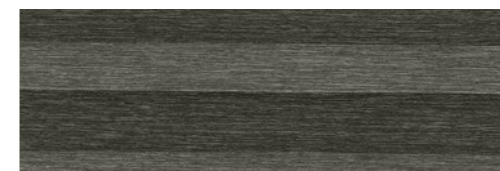
## ANTHRACITE


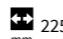


**72.0392** PG: **0**   
 100% recycled PES  
 RS: 28 AS: 42 TS: 30  225 mm 

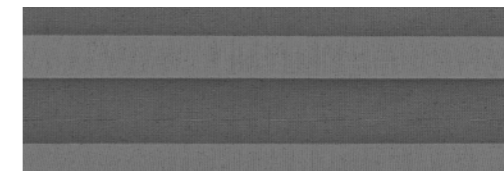




**72.0378** PG: **0**   
 100% PES  
 RS: 48 AS: 31 TS: 21  225 mm 

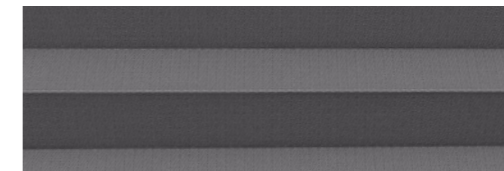




**72.0169** PG: **1**   
 100% PES  
 RS: - AS: - TS: -  225 mm

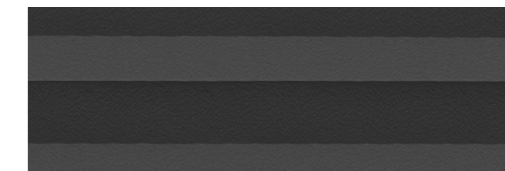
## PLISSÉSTOFFEN






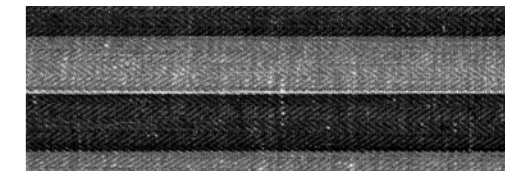
**72.0371** PG: **1**   
 100% Trevira CS  
 RS: 35 AS: 33 TS: 32  225 mm 





**72.0384** PG: **1**   
 100% PES  
 RS: - AS: - TS: -  225 mm

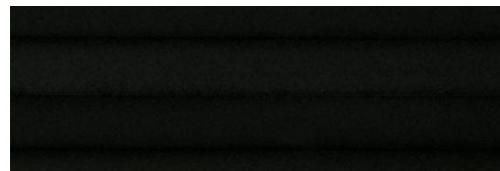


**72.0375** PG: **0**   
 100% PES  
 RS: 25 AS: 45 TS: 30  225 mm 

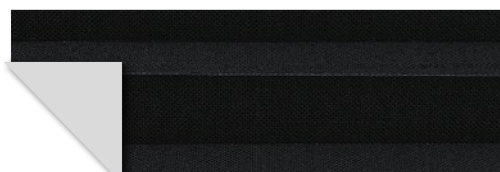


**72.0393** PG: **1**   
 100% PES  
 RS: 39 AS: 31 TS: 30  225 mm

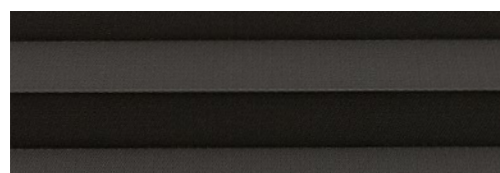
BLACK





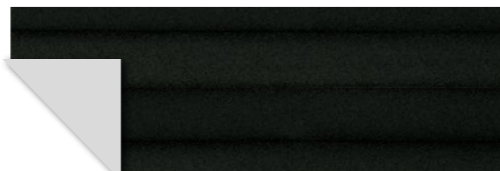
**72.0377** PG: 0   
 100% PES  
 RS: - AS: - TS: -  225 mm 



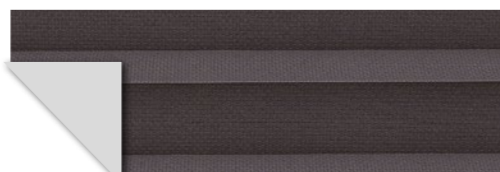
**72.0380** PG: 2   
 100% Trevira CS  
 RS: 49 AS: 35 TS: 16  225 mm 




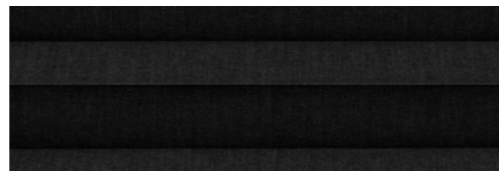
**72.0383** PG: 1   
 100% PES  
 RS: 38 AS: 62 TS: 0  225 mm



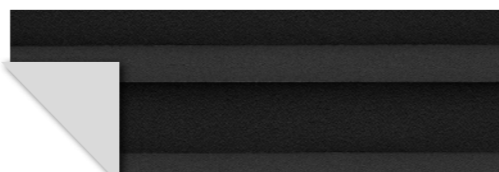
**72.0469** PG: 0   
 100% PES  
 RS: - AS: - TS: -  225 mm 




**73.0033** PG: 1   
 100% Trevira CS  
 RS: 39 AS: 30 TS: 31  225 mm



**72.0370** PG: 1   
 100% Trevira CS  
 RS: 26 AS: 47 TS: 27  225 mm 



**73.0032** PG: 1   
 100% Trevira CS  
 RS: 55 AS: 41 TS: 4  225 mm

## MATERIAALEIGENSCHAPPEN

### MATERIAAL

De stoffen in de collectie plissés bestaan uit polyester (PES), Trevira CS, 100% recycled PES of een combinatie van polyester en linnen. De meeste stoffen zijn 100% polyester. Dit is een synthetische vezel (kunstvezel) met een hoge slijtweerstand, een goede stabiliteit en een hoge lichtechtheid. Polyester krimpt en kreukt vrijwel niet, is goed te reinigen en goed bestand tegen zonlicht. Trevira CS is een permanent vlamvertragende vorm van polyester.





tru@

Een vijftal stoffen zijn gemaakt van post-consumer gerecycled PES. Deze stoffen, met het True-logo, zijn echte duurzame stoffen. Gemaakt met eerlijke, traceerbare materialen en eerlijke productieprocessen. Waarmee we echt een bijdrage leveren aan de toekomst van onze planeet en haar bewoners.



## TRANSPARANTIES

De stoffen in de collectie plissés bevatten stoffen in diverse transparanties: van transparant tot verduisterend plus. Een transparante stof zorgt voor een diffuse lichtinval en de kleur van de transparante stof bepaalt de mate van lichtinval. Lichte kleuren laten immers meer licht door dan donkere kleuren. Een verduisterend plus stof zorgt voor een hoge mate van verduistering, maar 100% is nooit te realiseren door de kier die ontstaat aan de zijkan-ten van de raamdecoratie.

-  **Transparant**
-  **Semi-transparant**
-  **Lichtdoorlatend**
-  **Verduisterend plus**

## ENERGIEWAARDEN

De stoffen in de collectie plissés kennen een drietal eigenschappen: de transmissie van energie (TS), de reflectie van energie (RS) en de absorptie van energie (AS). De kernmerken transmissie van energie, reflectie van energie en de absorptie van energie hebben samen altijd een waarde van 100%.

### DE TRANSMISSIE VAN ENERGIE (TS)

De hoeveelheid zonne-energie die doorgelaten wordt door de stof. Hoe hoger het percentage, hoe meer energie wordt doorgelaten door de stof.

### DE REFLECTIE VAN ENERGIE (RS)

De hoeveelheid zonne-energie die weerkaatst wordt door de stof. Hoe hoger het percentage, hoe meer energie wordt gereflecteerd door de stof.

### DE ABSORPTIE VAN ENERGIE (AS)

De hoeveelheid zonne-energie die geabsorbeerd wordt door de stof. Hoe hoger het percentage, hoe meer energie wordt geabsorbeerd door de stof. Donkere stofkleuren absorberen bijvoorbeeld meer energie en geven meer warmte af.



Plissés | Kleur 72.0400

## STOFWIJZER

Onder de diverse stoffen in de collectie plissés vind je symbolen die de eigenschappen van de stof weergeven. Met behulp van de stofwijzer hieronder kun je bepalen welke stof het beste bij jouw wensen past. Heb je vragen over specifieke stoffeigenschappen? Ga dan langs bij jouw Verano® partner. Je vindt de dichtstbijzijnde partner snel en eenvoudig op [www.verano.nl](http://www.verano.nl).

**72.1831**

Kleurnummer

 PG: **3**

Prijsgroep

100% PES

Samenstelling materiaal



Transparant



Semi-transparant



Lichtdoorlatend



Verduisterend plus

TS

Transmissie van energie (%)

RS

Reflectie van energie (%)

AS

Absorptie van energie (%)



Stofbreedte (mm)



Vlamvertragend



Plissés | Kleur 72.0401



Deze stoffen zijn voorzien van een witte achterzijde. Hoe lichter de kleur, hoe lager de warmteopbouw in jouw huis zal zijn.



Deze stoffen zijn voorzien van een zilverkleurige achterzijde. Hierdoor ontstaat een betere reflectie, op die manier wordt de warmte beter tegengehouden dan bij een donkere kleur.



Aan deze brochure kunnen geen rechten worden ontleend.  
23753977-210715

